

The Chadwick

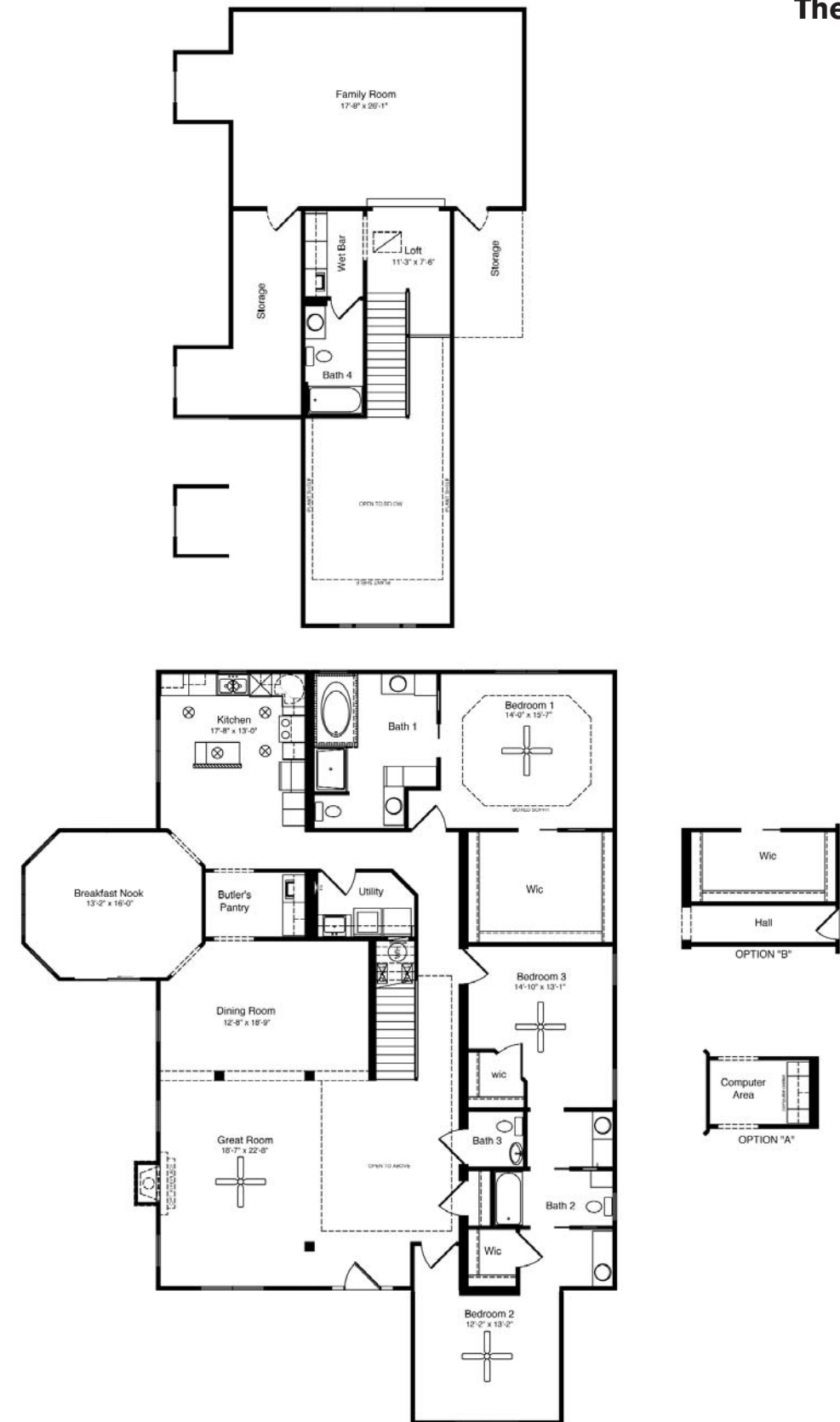


The Chadwick is a classic HandCrafted Homes Estate model. The 3,383 square foot two-story plan offers a butler's pantry, a 19-foot open-to-above foyer and a sunken family room, which are just a sampling of the unique features of this home. The wrap-around porch on the exterior of the home creates a welcoming feeling that is hard for anyone to resist.

The Chadwick
 3 Bedrooms, 3.5 Baths
 3,383 Living Area
 53'9" x 68'2" Dimensions

All home elevations are artist renderings and may vary from actual construction. All floor plans and room sizes are approximate. All information contained is the sole property of HandCrafted Homes

The Chadwick



All home elevations are artist renderings and may vary from actual construction. All floor plans and room sizes are approximate. All information contained is the sole property of HandCrafted Homes



The Chadwick
 3 Bedrooms, 3.5 Baths
 3,383 Living Area
 53'9" x 68'2" Dimensions

877.424.4321
 101 Eastern Minerals Rd Henderson, NC 27537
 436.0001
 430.6662 fax